

# WebAccordion White Paper

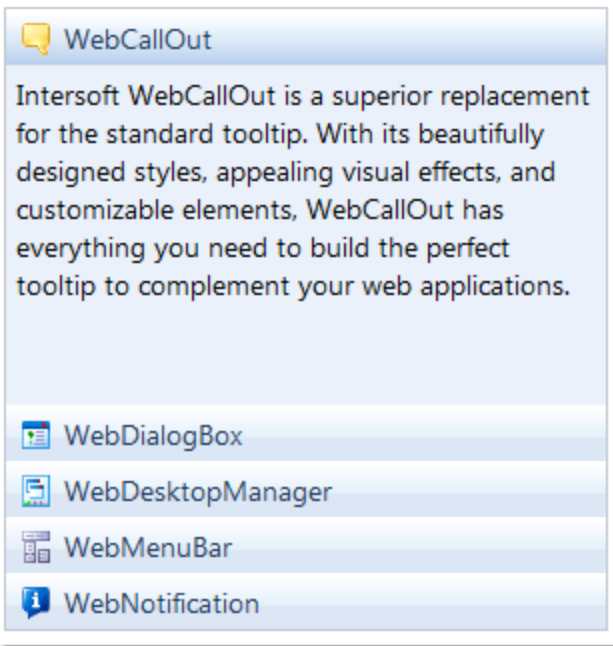
---

This whitepaper describes the concept and features introduced in WebAccordion.

## Table of Contents

- Display Multiple Panes in One Time ..... 2
- Easily Add Item..... 2
- Inline and IFrame Content ..... 3
- Flexible Behavioral Customization ..... 4
  - Expand Direction..... 4
  - Interaction Mode ..... 5
- Global and Individual Item Settings ..... 6
- Swift Animation..... 6
- XHTML Compliance ..... 6
- Default Styles ..... 6
- Advanced Layout Customization..... 7
- Comprehensive Client-side Events ..... 8
- Rich Client-side APIs..... 8

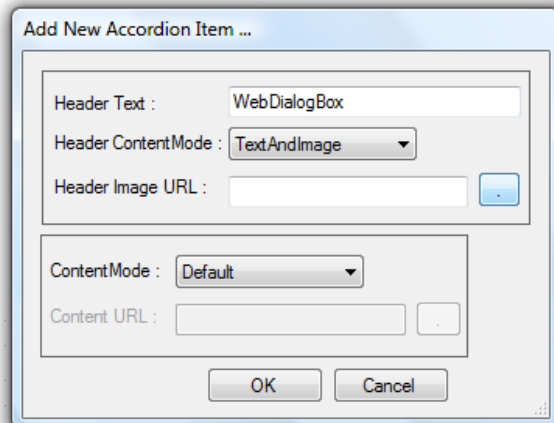
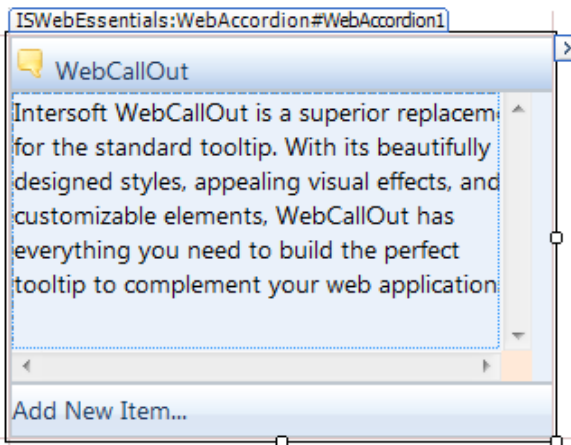
## Display Multiple Panes in One Time



WebAccordion enables developer to quickly add multiple expandable panes and display them one at a time. Adding pane or a collection of panes can be done through **Item** property collection in WebAccordion.

## Easily Add Item

Made to be easy to work with, WebAccordion emphasizes in the rich and interactive design time experience for accelerated development. To add a new pane, simply click on the header in Visual Studio's design time mode and follow the step-by-step wizard to configure your item.

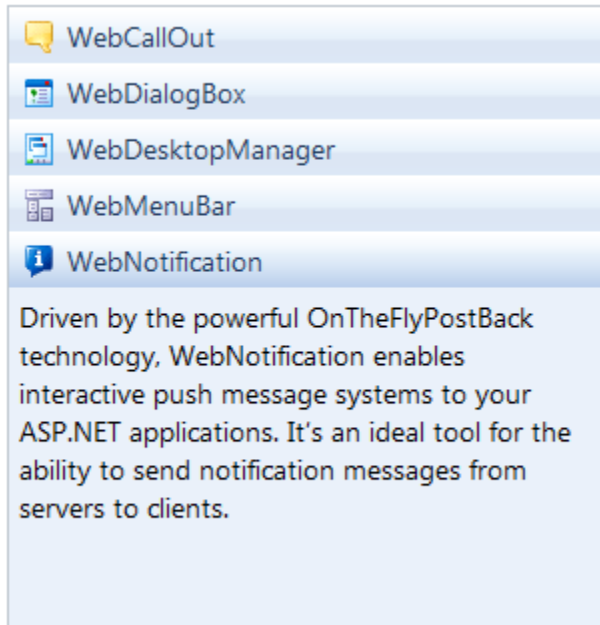


## Inline and IFrame Content

Two types of item content mode are available to match your scenario.

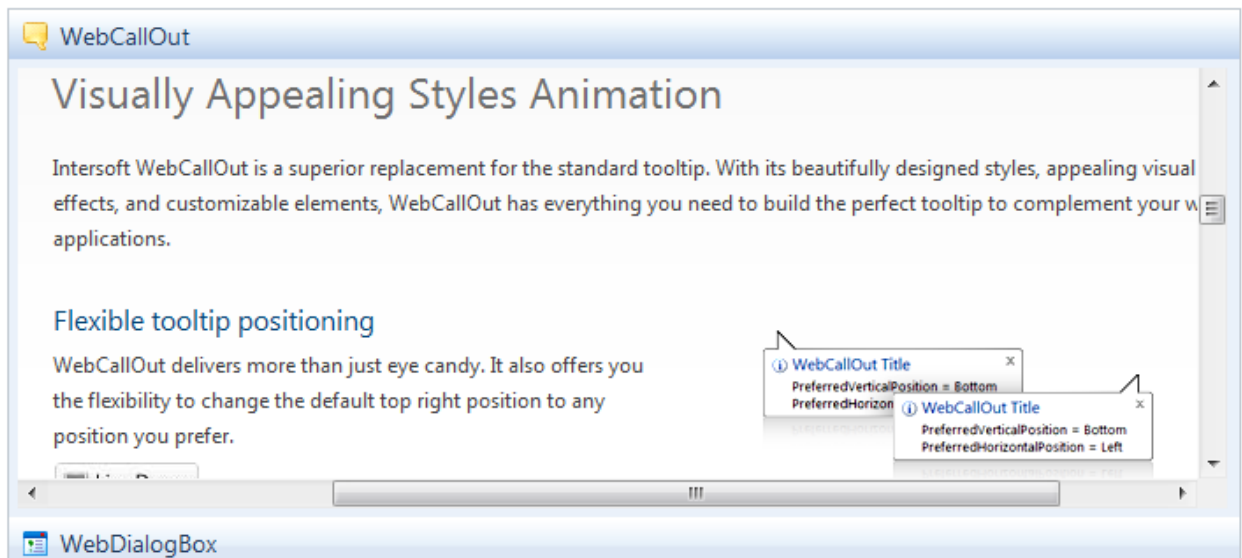
- Inline

This default mode enables the pane to be edited directly during design time.



- IFrame

IFrame mode is more flexible as developer can easily customize the **ContentURL** property and point it to a specific page.

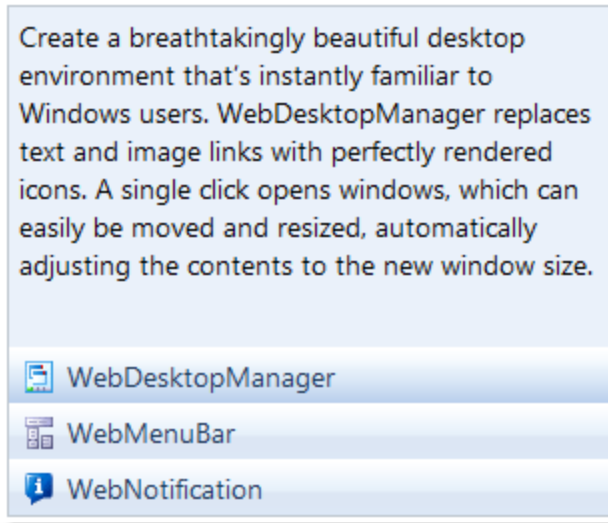


## Flexible Behavioral Customization

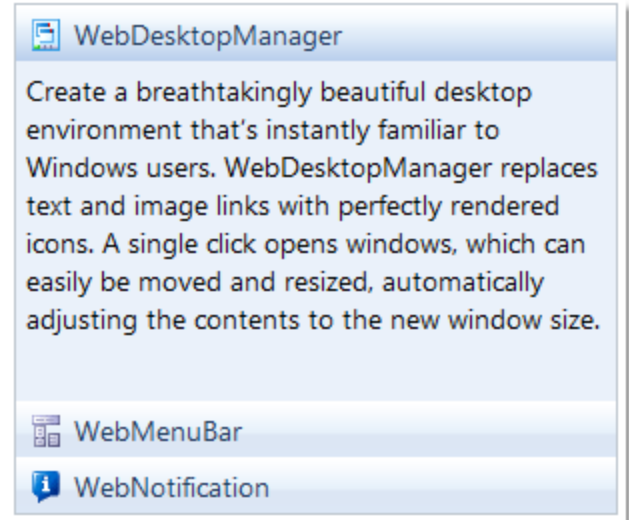
Built on top of a solid architecture, WebAccordion provides a rich array of layout and behavioral customizations to meet your business scenario. Two most fundamental manipulations are the expand direction and interaction mode.

### Expand Direction

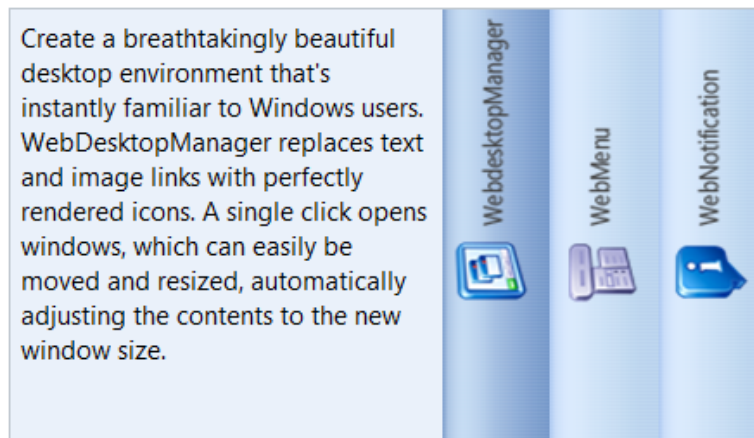
Controlled by **ExpandDirection** property, WebAccordion offers 4 expand direction: *top*, *bottom*, *left*, and *right*.



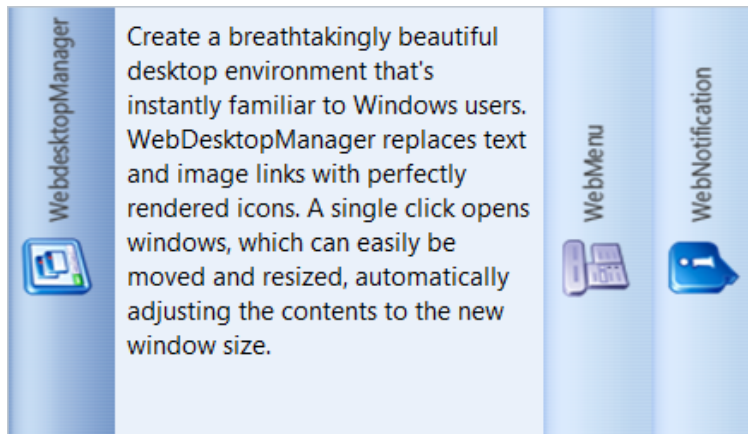
*Top expand direction*



*Bottom expand direction*



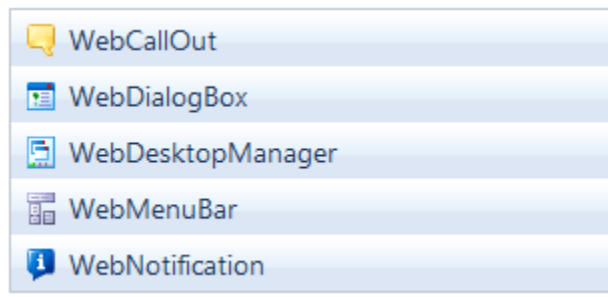
*Left expand direction*



*Right expand direction*

In addition to controlling the expand direction, **ExpandIndex** property enables you to determine which specific panes should be expanded initially during page load.

**Note:** When ExpandIndex is set to -1 then none of WebAccordion item will be expanded on first load.



## Interaction Mode

**InteractionMode** property determines how user interacts with WebAccordion. Three types of interaction mode are available:

- **MouseOver**  
WebAccordion will start expanding or collapsing when a cursor hovers and stops on an item (or pane) for a specific duration. Complementing this behavior, **DisplayLatency** property is provided – enabling you to control the mouse over state duration. The default value is 1000 ms.
- **Click**  
WebAccordion will start expanding or collapsing when the item's header is clicked.
- **Both**  
Combining both MouseOver and Click modes, WebAccordion will respond to a mouse click or mouse over.

## Global and Individual Item Settings

The global settings are particularly useful when you have numerous panes with same configurations, so you can quickly setup a WebAccordion quickly without having to specify it in each pane. Use the individual settings if you wish to customize a specific pane without affecting the other panes.

WebAccordionItem properties:	
General	
ContentMode	Default
ContentURL	
HeaderContentMode	TextAndImage
HeaderImageAlign	Default
HeaderImageSize	0, 0
HeaderImageURL	~/Images/callout_icon.png
HeaderText	WebCallOut

ItemSettings	
ContentMode	Inline
HeaderContentMode	Text
HeaderImageAlignment	Left
HeaderImageSize	20, 20

**Note:** Global item settings can be found in *ItemSettings* property. The individual item configuration is inside each of the item's property.

## Swift Animation

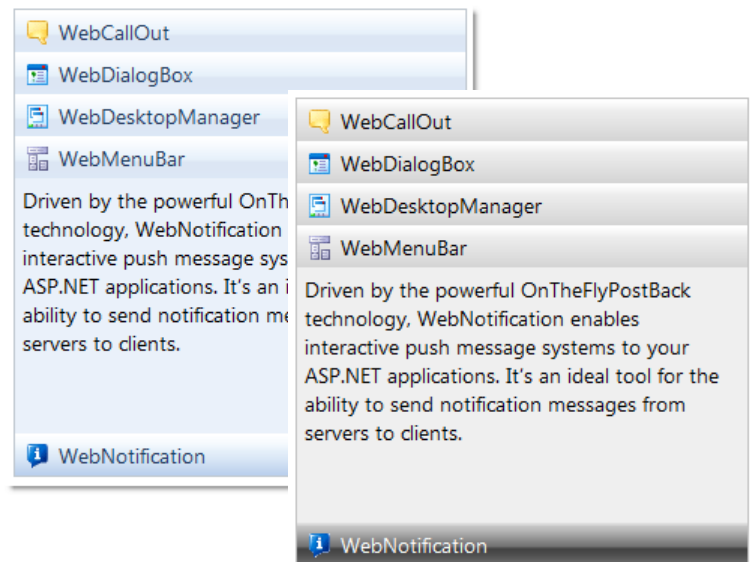
WebAccordion provides an elegant out-of-the-box animation when an item (or pane) is expanded or collapsed.

## XHTML Compliance

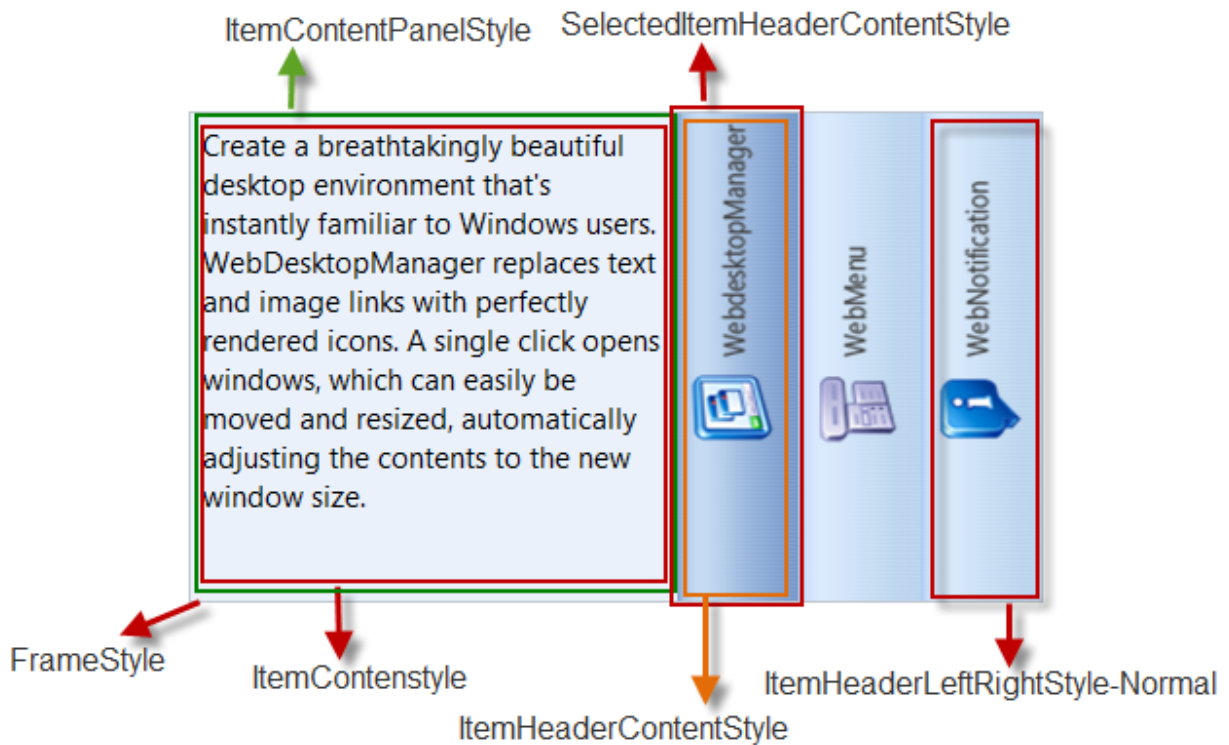
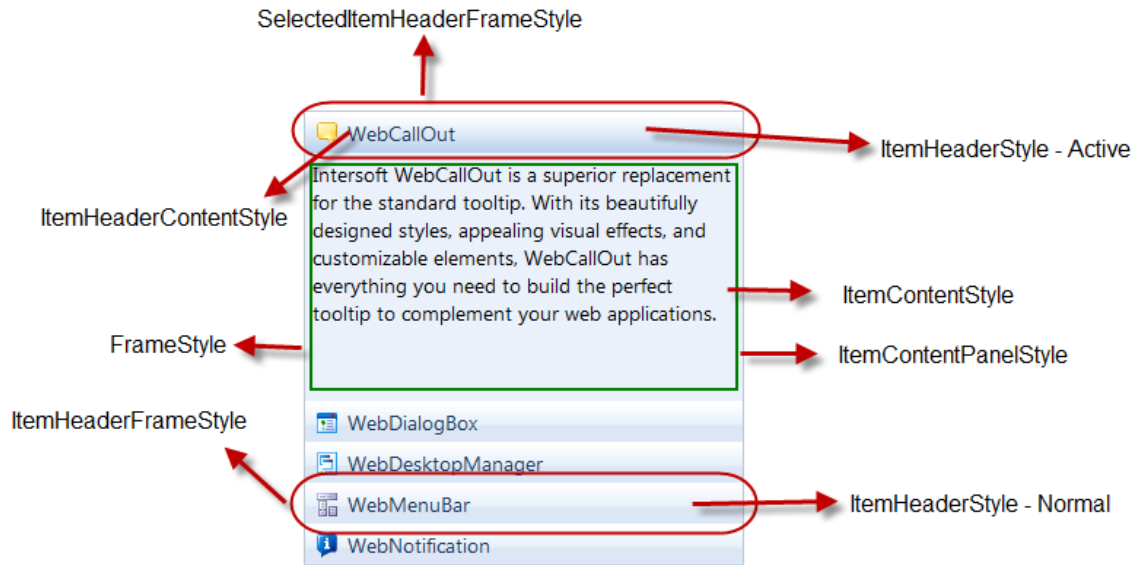
WebAccordion is designed to fully comply with W3C's XHTML standard – providing identical rendering when running in different modern XHTML-ready browsers.

## Default Styles

Two predefined default styles are provided for quick styling.



## Advanced Layout Customization



## Comprehensive Client-side Events

The following is the list of client side events in WebAccordion.

### **OnInitialize(*controlId*)**

This client-side event will be invoked when WebAccordion is initialized.

### **OnClick(*controlId, itemIndex*)**

This client-side event will be invoked when an item is clicked.

### **OnBeforeExpandCollapse(*controlId, currentItemIndex, nextItemIndex*)**

This client-side event will be invoked before an item is expanded or collapsed.

### **OnAfterExpandCollapse(*controlId, previousItemIndex, currentItemIndex*)**

This client-side event will be invoked after an item is expanded or collapsed.

## Rich Client-side APIs

The following is the list of client side APIs in WebAccordion.

Functions	Description
GetElement()	Gets WebAccordion's element.
GetItemElementByIndex( <i>index</i> )	Gets WebAccordion's item by index.
GetHeaderElementByIndex ( <i>index</i> )	Gets WebAccordion item's header element by index.
GetHeaderFrameElementByIndex( <i>index</i> )	Gets WebAccordion item's header frame element by index.
GetHeaderContentElementByIndex( <i>index</i> )	Gets WebAccordion item's header content element by index.
GetContentFrameElementByIndex( <i>index</i> )	Gets WebAccordion item's content element by index.
GetContentPanelElementByIndex( <i>index</i> )	Gets WebAccordion item's content panel by index.
GetContentElementByIndex( <i>index</i> )	Gets WebAccordion item's content element by index.
GetIFrameByIndex( <i>index</i> )	Gets WebAccordion's iFrame element by index.
HideIFrameByIndex( <i>index</i> )	Hide iFrame based on index.
ShowIFrameByIndex( <i>index</i> )	Show iFrame based on index.
MoveToItemByIndex( <i>index</i> )	Expand a WebAccordion's item based on index.
MoveToNextItem()	Expand the next WebAccordion item.
MoveToPrevItem()	Expand the previous WebAccordion item.