

The image features a decorative graphic on the right side consisting of three blue circles of varying sizes, each with a lighter blue ring around it. Two thin blue lines intersect at the top left, forming a large 'V' shape that frames the circles. The circles are positioned at the top right, middle right, and bottom right of the page.

## **WebUI Studio.NET 2008 R2**

Overview and highlight of new products and features in WebUI Studio.NET 2008 R2



**Delivers the future Web UI and Web UX concept  
Futuristic Silverlight 2 UI components, accessibility-compliant data grid control,  
enterprise-level Scheduling component and more.**

Following the previous successful release of WebUI Studio.NET 2008 R1, we are back with more surprises that will surely amaze you all. WebAqua.NET now goes to Silverlight 2.0. This significant enhancement allows you to have greater controls over WebAqua.NET components in design and functionality aspects inside Blend Expression design time environment. WebScheduler.NET, which also goes to version 2.0, is enhanced with enterprise-level features and enhancements to support more advanced and complex scenarios. These two are just a few that we have in this release.

**WebAqua.NET 2.0, the latest masterpiece by Intersoft Solutions.**

WebAqua.NET 2.0 is truly a masterpiece. Based on Silverlight 2.0 technology, it completely changes the way you interact with Web-application. No more click-and-wait as it is in the previous ASP.NET technology. What you get is the whole new sensation, the responsive and sleek User-interface, without eating up the client's resources.



Rewritten in Silverlight 2.0 technology, WebAqua offers an impressive development environment. You can easily consume WebAqua in both Silverlight version and ASP.NET version. Thanks to the robust XAPBridge™ technology, both development environments share the same codebase. This means the ASP.NET version can consume the same rich features as in Silverlight version. Two assemblies are shipped for each development environment, one for the pure Silverlight 2.0 platform and the other one for the powerful ASP.NET platform.

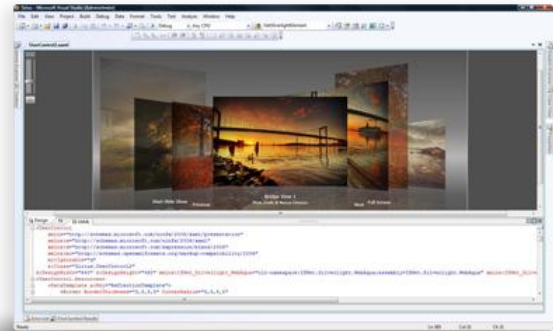
## Select and enjoy the rich development environments

Despite its advanced architecture bridging the Silverlight and ASP.NET platform, WebAqua also offers rich design time environment. Deeply integrated into Microsoft Expression Blend and Visual Studio 2008 (with Silverlight 2.0 Toolkit) for Silverlight version and Visual Studio 2005/2008 for ASP.NET version, it takes the full advantage of the interactive Microsoft Blend design time as well as the comprehensive Visual Studio 2005/2008 environment.



*Simply drag an instance of WebCoverFlow or WebFishEye to the designer area and notice that it blends perfectly to Blend design time experience.*

*With Silverlight 2.0 toolkit, you can consume all features of WebFishEye or WebCoverFlow as in the Silverlight development environment.*



*The innovative XAPBridge™ lets you develop using Silverlight 2.0-based WebAqua in the mature ASP.NET environment.*

## Powerful databinding and template item capability

With the introduction of databinding and templating capabilities in Silverlight 2.0 (Beta 2 or later), WebAqua is designed to take advantage of these powerful features. Developer can easily bind WebFishEye and WebCoverFlow elegantly.

*Both WebCoverFlow and WebFishEye support databinding to collection type of datasource such as List or IEnumerable type of datasource. The datasource is then assigned to WebFishEye's ButtonsSource property or WebCoverFlow's item source at runtime. When bound to the datasource properly, the cover items or buttons will be populated automatically. The values will also be bound to the databinding properties as well.*

Template item, on the other hand, provides full customization for creating your own custom container and user interface. You can later easily attach it to WebFishEye's buttons or WebCoverFlow's cover items. These two features are usually used together for various advanced LOBs scenarios. You can create an interactive card-style customers viewer or fluid login screen for your professional Web-application.



## Discover more about what's new in WebFishEye and WebCoverFlow.

Back in its initial version, WebFishEye was introduced as a sleek and modern docking navigation control, while WebCoverFlow was a phenomenal Web-based multimedia viewer. One big question arose after the introduction of both controls, "How does WebFishEye and WebCoverFlow fits in the real-world enterprise Web-application?". Read more to discover how WebFishEye and WebCoverFlow complete your Web-applications.

## WebFishEye.NET 2.0 - Stylish docking navigation control and more.

WebFishEye is rewritten from scratch just to take advantage of the latest Silverlight 2.0 technology. It's now sleeker and more interactive than its predecessor and ready to enrich your Web-application with stunning docking navigation control. Now, the zooming process is much smoother when scrolling through the buttons. Combining the smooth zooming behavior with after-click visual effects creates a new sensation in navigating through Web-applications.



*New in this version is the support of various background modes. Best of all background modes is the Fluid mode which automatically shrinks the dock's background and grows as the zooming process takes place. This translates to a nicer and more elegant user experience as users can interact with the navigation control with stunning visual effects.*

Stack button is one of the key features in WebFishEye. It's what that keeps your Web-based desktop clean from the cluttered icons. Introduced in this version 2.0 is the significant grid-stack button enhancement. In addition to the default square-style Grid stack button, there are various new modes, such as: AutoColumn, AutoRow, MaxColumn, and MaxRow.

- *Grid*. This is the default option for StackGridMode. When it is set to this mode, the Grid layout will use the value specified in StackGridColumn and StackGridRow.
- *AutoColumn*. When this mode is used, the Grid layout will show the stack buttons in one row with as many columns as the number of stack buttons.
- *AutoRow*. When this mode is used, the Grid layout will show the stack buttons in one column with as many rows as the number of stack buttons.
- *MaxColumn*. When this mode is used, the Grid layout will show the stack buttons in the number of columns specified in StackGridColumn. The stack button will be filled from left to right direction, and automatically wrap to the next row when it has reach the maximum number of columns as specified in the StackGridColumn property. This mode is preferred when you have unknown length of stack buttons and is usually suitable in dynamic data scenarios.
- *MaxRow*. When this mode is used, the Grid layout will show the stack buttons from top to bottom direction, and automatically wrap to the next column when it has reach the maximum number of rows as specified in StackGridRow property.



*Grid mode*



*MaxRow mode*



*AutoColumn mode*



*AutoRow mode*

## **WebCoverFlow.NET 2.0 - Phenomenal multimedia viewer and more.**

WebCoverFlow is also rewritten from scratch to support the cutting-edge Silverlight 2 technology. Along in this version, many exciting features and concepts are introduced to enrich your Web-application like no other.

Breakthrough concept, stunning visual animations, and robust performance are some of the key features built for you.



With the brand-new cover flowing mechanism, you can expect to see more from WebCoverFlow. The stunning and swift cover flowing makes the whole experience better. You can now truly enjoy your full multimedia collections in a very convenient way.



Another breakthrough feature from WebCoverFlow is the multiple focus mode. In the default behavior, only there is only 1 focus image, the focal image (center image) and surrounded by the preview image (image on the left and right side of the focal image). This special feature enables developer to customize the total focused number - from the default 1 to any numbers you specified. It is extremely important in certain scenarios, such as using WebCoverFlow for selection and navigation purpose. However, no matter how many items you've set, there is only one selectable item. To complement this brand-new behavior, **ActiveItemBoarder** is introduced. It enables you to set the border style for the selected item.

### **The world's most feature complete data grid with integrated Pivot Charting functionality and more.**

WebGrid.NET Enterprise 6.0 has been well-established as a power house third party data grid for years. With over 500+ features plus the interactive PivotCharting™, WebGrid.NET Enterprise gets more major enhancements to support broader and more complex scenarios for your business Web-applications.

### **Supports Section 508 Standard**

Everybody deserves the same equal rights in this world. In Intersoft, we translate it into "Everyone deserves the same equal Web-experience". With this idea in mind, we take the first step by enhancing WebGrid.NET Enterprise with assistive features to aid people with visual disabilities to interact with their data better. It supports Section 508 Standard in the following provisions:



- Provision 1194.22 – About Data Table Headers & Associations

- Row and column headers should be identified for data tables.
- Column headers should be in the same table structure as the table's contents (rows).
- Markup shall be used to associate data cells and header cells for data tables that have two or more logical levels of row or column headers.

*Supporting 508 Standards means a new Web-experience for people with disabilities. Web-developer also takes the advantage by creating a powerful Web-application which targets not only normal people, but also people with disabilities plus the abilities to run under 4 major browsers. What can be more?*

### Automatic Group Total Update

OrderID	Employee ID	Order Date	Required Date	Shipped Date	ShipVia	Freight
Customer ID: BERGS						
10278	8	12/08/1996	09/09/1996	16/08/1996	2	£92.69
> 10280	2	14/08/1996	11/09/1996	12/09/1996	1	£18.98
						Sum: £111.67
Customer ID: BLONP						
10265	2	25/07/1996	22/08/1996	12/08/1996	1	£55.28
10297	5	04/09/1996	16/10/1996	10/09/1996	2	£5.74
						Sum: £61.02
Customer ID: BSBEV						
Ready.						

WebGrid.NET Enterprise as a leading data grid component in this industry introduced advanced grouping behavior with built-in aggregation years back. This feature is very useful under certain circumstances where end-user needs to view their data in group mode with aggregation feature on certain columns. With the new enhancement, the total of the aggregate will be updated automatically upon every successful editing. This eliminates all workarounds required to achieve the same result in an elegant and simple solution.

### Easier data input then ever

CategoryID	QuantityPerUnit	UnitPrice	UnitsInStock
1	boxes		0
1	10 boxes x 20 bags 18		39
1	24 - 12 oz bottles 19		17
2	12 - 550		
2	48 - 6 oz		
2	36 boxes		
2	12 - 8 oz jars	25	120
7	12 - 1 lb pkgs	30	15

The Default value appears automatically when user clicks in new row

This important enhancement minimizes the data input while also enhances the data input accuracy and quality. Developer can easily set the default value for certain cells for the new row without marking it as dirty. This makes end-user data input easier when the default value matches the most of the new values to input and if user clicks somewhere else, it won't be saved automatically.

## Stronger keyboard support for multiple row selection

Using CTRL or SHIFT to select multiple items is the basic of any Windows® desktop. WebGrid.NET Enterprise adopts this desktop behavior in this 2008 R2 release. In the traditional WebGrid.NET approach for multiple row selection is to use checkbox which proves less effective for certain cases.

	ProductID	ProductName	SupplierID
	1	Chai	1
	2	Chang	1
	3	Aniseed Syrup	1
	4	Chef Anton's Ca...	2
	5	Chef Anton's Gu...	2
	6	Grandma's Boys...	3
	7	Uncle Bob's Org...	3

*CTRL + Clicks to select multiple individual rows*

	16	Pavlova	7
	17	Alice Mutton	7
	18	Carnarvon Tigers	7
	19	Teatime Chocol...	8
	20	Sir Rodney's Mar...	8
	21	Sir Rodney's Sco...	8
	22	Gustaf's Knäcke...	9
	23	Tunnbröd	9
>	24	Guaraná Fantásti...	10
	25	NuNuCa Nuß-N...	11
	26	Gumbär Gummi...	11

*or SHIFT + Clicks to select a range of continuous rows*

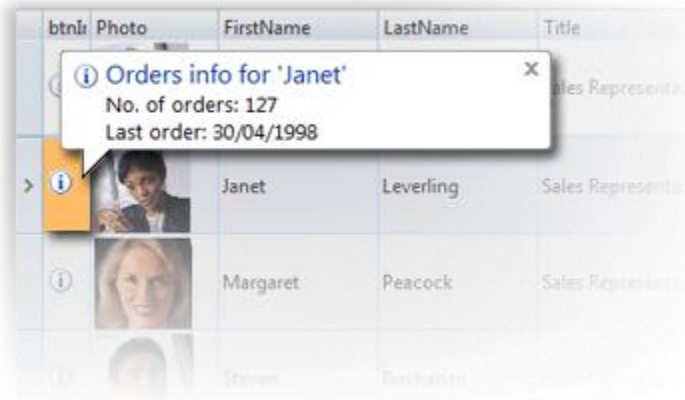
	11	Queso Cabrales	5
	12	Queso Mancheg...	5
	13	Konbu	6
	14	Tofu	6
	15	Genen Shouyu	6
	16	Pavlova	7
	17	Alice Mutton	7
	18	Carnarvon Tigers	7
	19	Teatime Chocol...	8
	20	Sir Rodney's Mar...	8
	21	Sir Rodney's Sco...	8

*or CTRL + SHIFT + Clicks to select multiple ranges of continuous rows without clearing the previous selection*



### New “ButtonImage” column type

Due to the popular demand of the ability to support “ButtonImage” column type natively instead of manually inserting the button image as a server-side template and handling all actions manually, we are pleased to announce that WebGrid.NET Enterprise 6.0 now supports “ButtonImage” column type. Developer can simply select the column type to ButtonImage via the Component Designer® 2.0 and take advantage of WebGrid’s powerful postback mechanism.



### Preserving expanded child rows

WebGrid.NET Enterprise has been long known as a very powerful data grid which supports unlimited nested table inside another table. This feature is very important in sophisticated data analytical presentation. Along with the 2008 R2 release, a long-awaited feature by our eager customers is introduced to enhance the hierarchical databinding capability. This unique feature is the ability to preserve the expanded child rows after FlyPostBack™ actions.

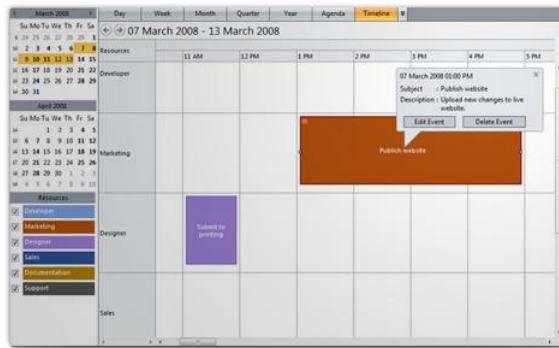
*End user can now perform grouping, sorting, or any FlyPostBack™ actions on his hierarchical data without losing the previously expanded child rows. This feature comes in handy in certain scenarios, such as: when end user doesn't have to be bothered when comparing data in different page without having to expand after navigating back and forth or when grouping and sorting WebGrid, especially when thousands of records are bound to a single WebGrid instance.*

### WebScheduler.NET 2.0, understands your enterprise needs.

There aren't many great and reliable scheduling, calendaring, and planning component that truly target the enterprise Web-application. With the new enhancements in this 2008 R2 release, WebScheduler.NET 2.0 is here to prove its worthy existence as a powerful and reliable scheduling, calendaring, and planning component targeting enterprise-wide Web-application.

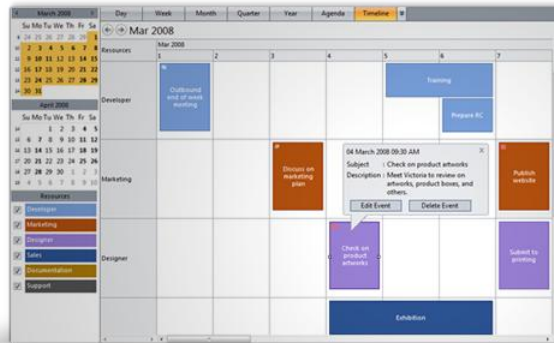
### The sophisticated Timeline™ View feature

Timeline™ View is one of the unique features introduced in WebScheduler.NET version 2.0. It is designed to allow user to view the information in an innovative way – where resources are listed on the rows and time on the columns. Event information can be viewed in side-by-side manners and easily compared it with other resources in top-down manner.



Timeline Time View, on the other hand, offers more detailed event information viewing. It gives clear information about the events information within one week time span in hourly basis.

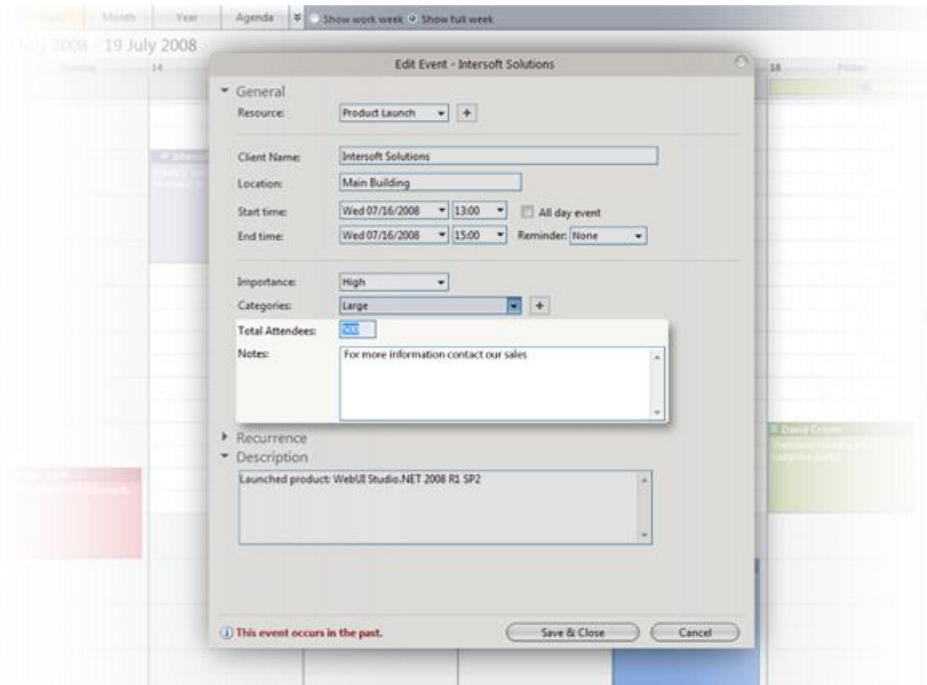
Timeline Day View enables end-user to view their event information in daily basis for the selected month.



*As a reliable enterprise scheduling and planning solutions, WebScheduler.NET is enhanced with a comprehensive collection of client APIs for customizations sake to complement the sophisticated Timeline™ View. Developer is given total control over the WebScheduler's Timeline elements to enhance the look-and-feel and behaviors according to the requirements.*

### Highly extensible editing form

With the introduction of Open Architecture Editing Form concept back in version 1.0, WebScheduler.NET is enhanced to extend the concept beyond. The new elegant approach enables you to bind custom field and integrate it to the editing form. This means that you can add as many fields as you like while still be able to reuse the built-in editing form.



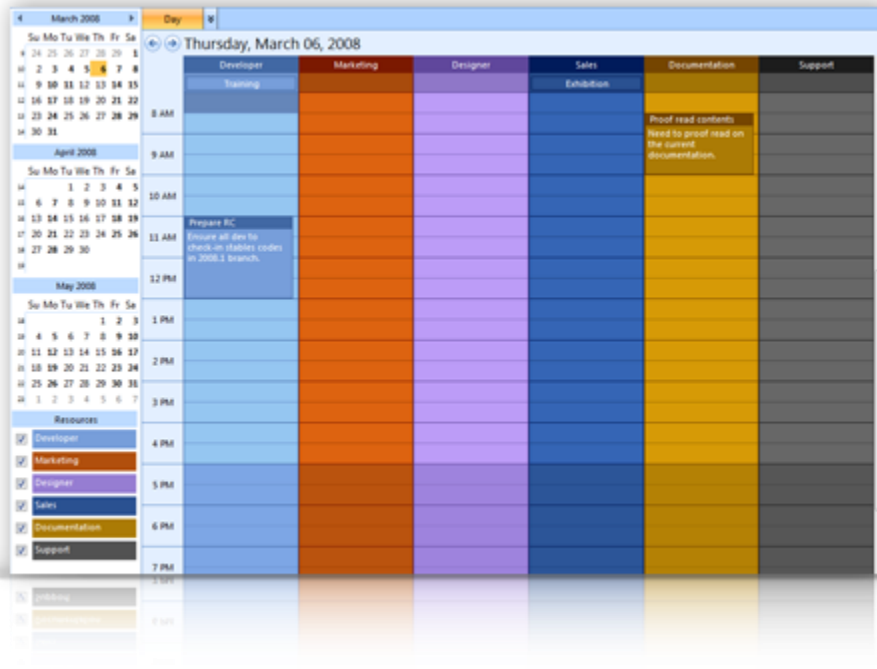
Notice that there are two extra fields added to the elegant editing form. The wonderful thing with this new extensibility feature is no matter how many extra fields you put, it will enjoy the same behavior as the default field. By taking advantage of the powerful and unique extensibility architecture, many advanced scenarios can be achieved easily while still reusing the default editing form and its behavior.

### **More advanced and high performance features with WebScheduler.NET 2.0**

With two very unique and practical features introduced in the previous page, we are here with more surprises to offer. Follow our tour to discover what you can achieve with WebScheduler.NET.

### **The innovative TrueSplitView™ mode**

Being developer's first choice when it comes to calendaring, scheduling, and planning component in the industry, WebScheduler.NET is here to introduce you another sophisticated View, the innovative TrueSplitView™ mode. TrueSplitView™ is an innovative and unique view because it enables end user to view his events grouped by resources. Despite its complex and elegant rendering mechanism, switching to TrueSplitView™ is as fast as switching to any Views, such as: Day Views or Month Views. The secret behind this ultra fast view switching is the matured TripleLoad™ mechanism.



This superior feature also comes with lots of enhancements and nice eye candies. For example, the elegant content area rendering. Since it's taking the resources as grouping basis, the resources columns in the content area also have the same coloring as the resources color. The drag-and-drop behavior offers the same rich experience as on the other normal views, such Day View, etc. However, when drag-and-drop is performed in TrueSplitView™ mode, only the event's resource will be updated. You can still use the built-in editing form to change other event information.

### Comprehensive Exporting Functionality

Exporting is a very critical functionality for data-bound-able components. WebScheduler.NET as a superior scheduling component supporting elegant databinding mechanism offers a robust and fully-featured exporting capability integrated deeply in WebScheduler's header element. With a simple property set, end user can enjoy this elegant exporting instantly. Supporting two widely-known formats, PDF and iCal, exporting to any of these file is a single click away.





This new feature is the answer for WebScheduler and Microsoft Outlook synchronization. With comprehensive Client APIs and server side methods, you can customize how exporting process will be executed and the results. These enhancements are offered to provide a better control on WebScheduler for advanced and specific scenarios.

### Other enhancements offered in version 2.0

As compliments to the new major features introduced, WebScheduler.NET also includes significant enhancements to be the best scheduling component in the industry. Some enhancements offered are:

- Hiding calendar's tooltip.
- Displaying total event only in the tooltip.
- Showing Editing Form when an empty cell is clicked.
- Hiding the Resources area.
- Showing the event's subject only in Month View.
- Customizing the week number in both scheduler and calendar.

Please visit [WebScheduler's page](#) to read more to discover more features on WebScheduler.NET - the developer's top choice for their enterprise scheduling solutions.

### Wrapping Up

Thanks for staying with us to watch the presentation of our latest works.

Here is the summary of the new offering in 2008 R2:

- Built from scratch on Silverlight 2 platform, WebAqua.NET is ready to shine your Web-application than ever before.
- WebScheduler goes to enterprise level. Enhanced with various enterprise-wide features, such as: TrueSplitView™ and Timeline™ View, WebScheduler.NET is ready to answer your enterprise-need for robust and superior scheduling, calendaring, and planning solutions.
- Major enhancements in WebGrid.NET Enterprise™ make it the real power house data grid in the industry.
- Supports for Microsoft's latest platforms and tools, such as: Microsoft Expression Blend June 2008 Preview, Microsoft SharePoint, and Microsoft Visual Studio 2008.
- Support for Firefox 3.0. All products are now enhanced to support recently released Mozilla Firefox 3.0.
- Various enhancements to WebDesktop.NET and existing product lines based on customers' feedback.

If you are our registered subscriber, please logon to [Intersoft Developer Network](#) and download the retail version of the new release right away. Otherwise, please download the [fully functional free 30 days evaluation software](#).

### What's Next

We encourage you to download the fully functional 30-days WebUI Studio.NET 2008 R2 Evaluation and experience the new possibilities and innovations by yourself. Please click Finish to go to download form.

For more information on new features and new products available in 2008 R1, please refer to the following quick links:

- [Major enhancements on WebGrid.NET Enterprise® 6.0](#)
- [Major enhancements on WebScheduler.NET 2.0](#)
- [Major enhancements on WebAqua.NET® 2.0](#)
- [Major enhancements on WebFishEye.NET® 2.0](#)



- [Major enhancements on WebCoverFlow.NET® 2.0](#)

New Showcases in 2008 R2:

- [2008 R2 Live Demo Site](#)
- [WebAqua 2.0 for ASP.NET Live Demo](#)
- [WebAqua 2.0 for Silverlight \("Sirius" 2\) Showcase](#)